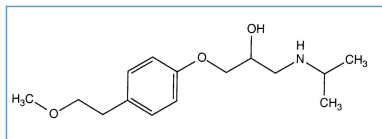


Stabilis



Metoprolol tartrate



Noms commerciaux

Beloc	Autriche, Suisse, Turquie
Beloken	Espagne
Betaloc	Grande Bretagne, Pologne
Lopresor	Canada
Selokeen	Pays bas
Seloken	Belgique, Brésil, Danemark, Finlande, Italie, Norvège, Suède



Stabilité des solutions
















Icon 1	Icon 2	Icon 3	Icon 4	Icon 5	Icon 6	Icon 7	Icon 8	Icon 9
		1 mg/ml	25°C		230			3538
		0,4 mg/ml	24°C		36			238
		0.5 mg/ml	23-25°C		30			2267
		1 mg/ml	23-25°C		30			2267



Compatibilités

Icon 1	Icon 2	Icon 3	Icon 4	Icon 5
	Metoprolol tartrate : 0.5 mg/ml Alteplase : 0.5 mg/ml			240
	Metoprolol tartrate : 1 mg/ml Amiodarone hydrochloride : 1.8 mg/ml			2346
		Metoprolol tartrate : 1 mg/ml Amphotericin B cholesteryl sulfate complex : 0.83 mg/ml		921
	Metoprolol tartrate : 1 mg/ml Argatroban : 1 mg/ml			1964
	Metoprolol tartrate : 1 mg/ml Bivalirudin : 5 mg/ml			1944
		Metoprolol tartrate Calcium gluconate		3644
	Metoprolol tartrate : 0.4 mg/ml Cefepime dihydrochloride : 40 mg/ml			3879
	Metoprolol tartrate : 1 mg/ml Ceftaroline fosamil : 2,22 mg/ml		RL	3249

		Metoprolol tartrate : 1 mg/ml Ceftaroline fosamil : 2,22 mg/ml		3249
		Metoprolol tartrate : 1 mg/ml Ceftobiprole medocaril sodium : 2 mg/ml		2269
		Metoprolol tartrate : 1 mg/ml Ceftobiprole medocaril sodium : 2 mg/ml	RL	2269
		Metoprolol tartrate : 0.4 mg/ml Ciprofloxacin lactate : 2 mg/ml		3879
		Metoprolol tartrate : 0.4 mg/ml Cisatracurium besylate : 2 mg/ml		3879
		Metoprolol tartrate : 1 mg/ml Diltiazem hydrochloride : 1 mg/ml		2346
		Metoprolol tartrate : 0.4 mg/ml Doripenem : 4.5 mg/ml		3879
		Metoprolol tartrate : 0.4 mg/ml Epinephrine hydrochloride : 128 µg/ml		3879
		Metoprolol tartrate Eptifibatide		3934
		Metoprolol tartrate : 1 mg/ml Eptifibatide : 0.75 mg/ml		2346
		Metoprolol tartrate : 0.4 mg/ml Esomeprazole sodium : 0.8 mg/ml		3879
		Metoprolol tartrate : 1 mg/ml Furosemide : 10 mg/ml		2346
		Metoprolol tartrate : 1 mg/ml Heparin sodium : 1000 UI/ml		2346
		Metoprolol tartrate : 0.4 mg/ml Human albumin : 250 mg/ml		3879
		Metoprolol tartrate : 0.4 mg/ml Hydrocortisone sodium succinate : 1 mg/ml		3879
		Metoprolol tartrate : 0.4 mg/ml Ibuprofen lysinate : 4 mg/ml		3879
		Metoprolol tartrate : 1 mg/ml Imipenem-Cilastatin / Relebactam : 5 mg/ml		4433
		Metoprolol tartrate : 0.4 mg/ml Levofloxacin : 5 mg/ml		3879
		Metoprolol tartrate : 0.4 mg/ml Levothyroxine : 0.4 µg/ml		3879
		Metoprolol tartrate : 1 mg/ml Lidocaine hydrochloride : 8 mg/ml		2346
		Metoprolol tartrate Magnesium sulfate		3838
		Metoprolol tartrate : 1 mg/ml Meropenem : 50 mg/ml		4319
		Metoprolol tartrate : 0.4 mg/ml Meropenem : 20 mg/ml		3879
		Metoprolol tartrate : 1 mg/ml Milrinone lactate : 0.2 mg/ml		2346
		Metoprolol tartrate : 1 mg/ml Morphine sulfate : 1 mg/ml		62
		Metoprolol tartrate : 1 mg/ml Nesiritide : 0.006 mg/ml		2346

		Metoprolol tartrate : 1 mg/ml Nitroglycerin : 0.2 mg/ml		2346
		Metoprolol tartrate : 1 mg/ml Nitroprusside sodium : 0.4 mg/ml		2346
		Metoprolol tartrate : 0.4 mg/ml Norepinephrine bitartrate : 0.128 mg/ml		3879
		Metoprolol tartrate : 0.4 mg/ml Paracetamol : 10 mg/ml		3879
		Metoprolol tartrate : 1 mg/ml Pethidine hydrochloride : 10 mg/ml		62
		Metoprolol tartrate : 1 mg/ml Procainamide hydrochloride : 8 mg/ml		2346
		Metoprolol tartrate : 1 mg/ml Sugammadex : 100 mg/ml		3372



Voie d'administration



Bibliographie

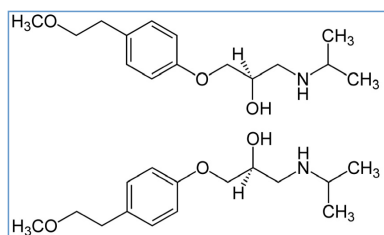
	Type	Source
62	Revue	Pugh CB, Pabis DJ, Rodriguez C. Visual compatibility of morphine sulfate and meperidine hydrochloride with other injectable drugs during simulated Y-site injection. Am J Hosp Pharm 1991 ; 48: 123-125.
238	Revue	Belliveau PP, Shea BF, Scavone JM. Stability of metoprolol tartrate in 5% dextrose injection or 0.9% sodium chloride injection. Am J Hosp Pharm 1993 ; 50: 950-952.
240	Revue	Lam XM, Ward CA, de C du M?e CPR. Stability and activity of alteplase with injectable drugs commonly used in cardiac therapy. Am J Health-Syst Pharm 1995 ; 52: 1904-1909.
921	Revue	Trissel LA, Gilbert DL, Martinez JF. Incompatibility and compatibility of amphotericin B cholesteryl sulfate complex with selected other drugs during simulated Y-site administration. Hosp Pharm 1998 ; 33: 284-292.
1944	Revue	Hartman CA, Faria CE, Mago K. Visual compatibility of bivalirudin with selected drugs. Am J Health-Syst Pharm 2004 ; 61: 1774.
1964	Revue	Hartman CA, Baroletti SA, Churchill WW et al. Visual compatibility of argatroban with selected drugs. Am J Health-Syst Pharm 2002 ; 59: 1784-1785.
2267	Revue	Kraft MD, Johnson CE, Chung C, Julian F. Stability of metoprolol tartrate injection 1 mg/ml undiluted and 0.5 mg/ml in 0.9% sodium chloride injection and 5% dextrose injection. Am J Health-Syst Pharm 2008 ; 65, 7: 636-638.

2269	Revue	Chan P, Bishop A, Kupiec TC, Trissel LA, Gole D, Jimidar IM, Vermeersch H. Compatibility of ceftobiprole medocaril with selected drugs during simulated Y-site administration. Am J Health-Syst Pharm 2008 ; 65, 16: 1545-1551.
2346	Revue	Newland A.M, Mauro V.F, Alexander K.S. Physical compatibility of metoprolol tartrate injection with selected cardiovascular agents Am J Health-Syst Pharm 2009 ; 66: 986-987.
3249	Revue	Singh BM, Dedhiya MG, Dinunzio J, Chan P, Kupiec TC, Trissel LA, Laudano JB. Compatibility of ceftaroline fosamil for injection with selected drugs during simulated Y-site administration. Am J Health-Syst Pharm 2011 ; 68: 2163-2169.
3372	Revue	Hanci V, Ali Kiraz H, Ömür D, Ekin S, Uyan B, Yurtlu B.S. Precipitation in Gallipoli: Sugammadex / Amiodarone & Sugammadex / Dobutamine & Sugammadex / Protamine. Rev Bras Anesthesiol 2013 ; 63, 1: 163-166.
3538	Revue	Gilcher Th, Heeb R M, Krämer I. Physikalisch-chemische Stabilität einer Metoprolol-Injektionslösung 1 mg/ml, 50 ml. Krankenhauspharmazie 2013 ; 11: 524-525.
3644	Laboratoire	Calcium gluconate® - Summary of Product Characteristics Hameln Pharmaceuticals 2010
3838	Laboratoire	Magnesium Sulphate - Summary of Product Characteristics Martindale Pharmaceuticals Ltd 2007
3879	Revue	Foushee Jaime A, Meredith Pmichaele, Fox Laura M, Grace Edward E. Y-site Physical Compatibility of Beta-blocker Infusions with Intensive Care Unit Admixtures. Int J Pharm Compound 2016 ; 20, 4 : 328-332.
3934	Laboratoire	Eptifibatide (Integrilin®) - Résumé des caractéristiques du produit GlaxoSmithKline Laboratoire 2016
4319	Revue	Lessard J-J, Caron E, Schérier H, Forest J-M, Leclair G. Compatibility of Y-site Injection of Meropenem Trihydrate With 101 Other Injectable Drugs. Hosp Pharm 2020 ; 55, 5: 332-337.
4433	Revue	Ghazi I.M, El Nekidy W.S, Sood A, Dulku A, Patel R, Patel K. Y-site Administration of Imipenem/Cilastatin/ Relebactam With Common Intravenous Medications Clin Ther 2020 ; 42, 3: 475-485.

Stabilis



Metoprolol tartrate



Stabilité des préparations

		1000 mg Betaloc®	Poudre adragante 3000 mg Eau chloroformée 2.5 ml Sirop simple 12.5 ml Eau distillée >> 100 ml	21-25°C		90		2556
		500 mg ®=?	Eau purifiée >> 100 ml	25°C		16		653
		1000 mg Betaloc®	Poudre adragante 3000 mg Eau chloroformée 2.5 ml Sirop simple 12.5 ml Eau distillée >> 100 ml	5-7°C		90		2556
		1,5 g ® = ?	SyrSpend SF PH4® >> 150 ml	2-8°C		90		3994
		1,5 g ® = ?	SyrSpend SF PH4® >> 150 ml	20-25°C		90		3994
1200 mg ®=? (Mylan Pharmaceutical)		OraPlus® / OraSweet® (1:1) >> 120 ml	25°C		60			2435
1200 mg ®=? (Mylan Pharmaceutical)		OraPlus® / OraSweet SF® (1:1) >> 120 ml	25°C		60			2435
1200 mg ®=? (Mylan Pharmaceutical)		Sirop cerise / sirop simple (1:4) >> 120 ml	25°C		60			2435
75 mg ®=? (Careco Pharmaceutical)		Sorbitol 17.5g Eau purifiée >> 60 ml	4-8°C		56			2931
1200 mg ®=? (Mylan Pharmaceutical)		OraPlus® / OraSweet® (1:1) >> 120 ml	25°C		60			2435
1200 mg ®=? (Mylan Pharmaceutical)		OraPlus® / OraSweet SF® (1:1) >> 120 ml	25°C		60			2435
1200 mg ®=? (Mylan Pharmaceutical)		Sirop cerise / sirop simple (1:4) >> 120 ml	25°C		60			2435



Bibliographie

	Type	Source
653	Revue	Das Gupta V. Quantification of metoprolol tartrate and propranolol hydrochloride in pharmaceutical dosage forms : stability of metoprolol in aqueous mixture. Int J Pharm Compound 1997 ; 1: 125-127.
2435	Revue	Allen LV, Jr, Erickson MA, Stability of labetalol hydrochloride, metoprolol tartrate, verapamil hydrochloride, and spironolactone with hydrochlorothiazide in extemporaneously compounded oral liquids Am J Health-Syst Pharm 1996 ; 53: 2304-2309.
2556	Revue	Peterson GM, Meaney MF, Reid CA. Stability of extemporaneously prepared mixtures of metoprolol and spironolactone. Aust J Hosp Pharm 1989 ; 19.: 344-346.
2931	Revue	Yamreudeewong W, Dolence EK, Pahl D. Stability of two extemporaneously prepared oral metoprolol and carvedilol liquids. Hosp Pharm 2006 ; 41: 254-259.
3994	Revue	De Oliveira Ferreira A, Polonini H C, Loures da Silva S, Cerqueira de Melo V Augusto, de Andrade L, Fernandes Brand?o Marcos A. Stability of Alprazolam, Atropine Sulfate, Glutamine, Levofloxacin, Metoprolol Tartrate, Nitrofurantoin, Ondansetron Hydrochloride, Oxandrolone, Pregabalin, and Riboflavin in SyrSpend SF pH4 Oral Suspensions. Int J Pharm Compound 2017 ; 3: 255-263



Dictionnaire

Antiarythmique	Injectable
Noms commerciaux	Stabilité des solutions
Contenant	Molécule
Concentration	Température
Conservation	Durée de stabilité
Biosimilaire	Données conflictuelles
Bibliographie	Verre
Chlorure de sodium 0,9%	A l'abri de la lumière
Jour	Polyvinyl chlorure
NaCl 0,9% ou glucose 5%	Lumière
Heure	Non précisé
Non précisée	Aucun
Compatibilités	Molécule
Solvant	Compatible
Eau pour préparation injectable	Glucose 5%
Précipitation immédiate	Incompatible
Incompatibilité non précisée	RL Ringer lactate
Instabilité chimique	Précipitation en 8 heures
Voie d'administration	Intraveineuse
Bibliographie	Solution buvable
Stabilité des préparations	Origine
Excipient	Comprimés
Flacon plastique	Poudre
Dictionnaire	